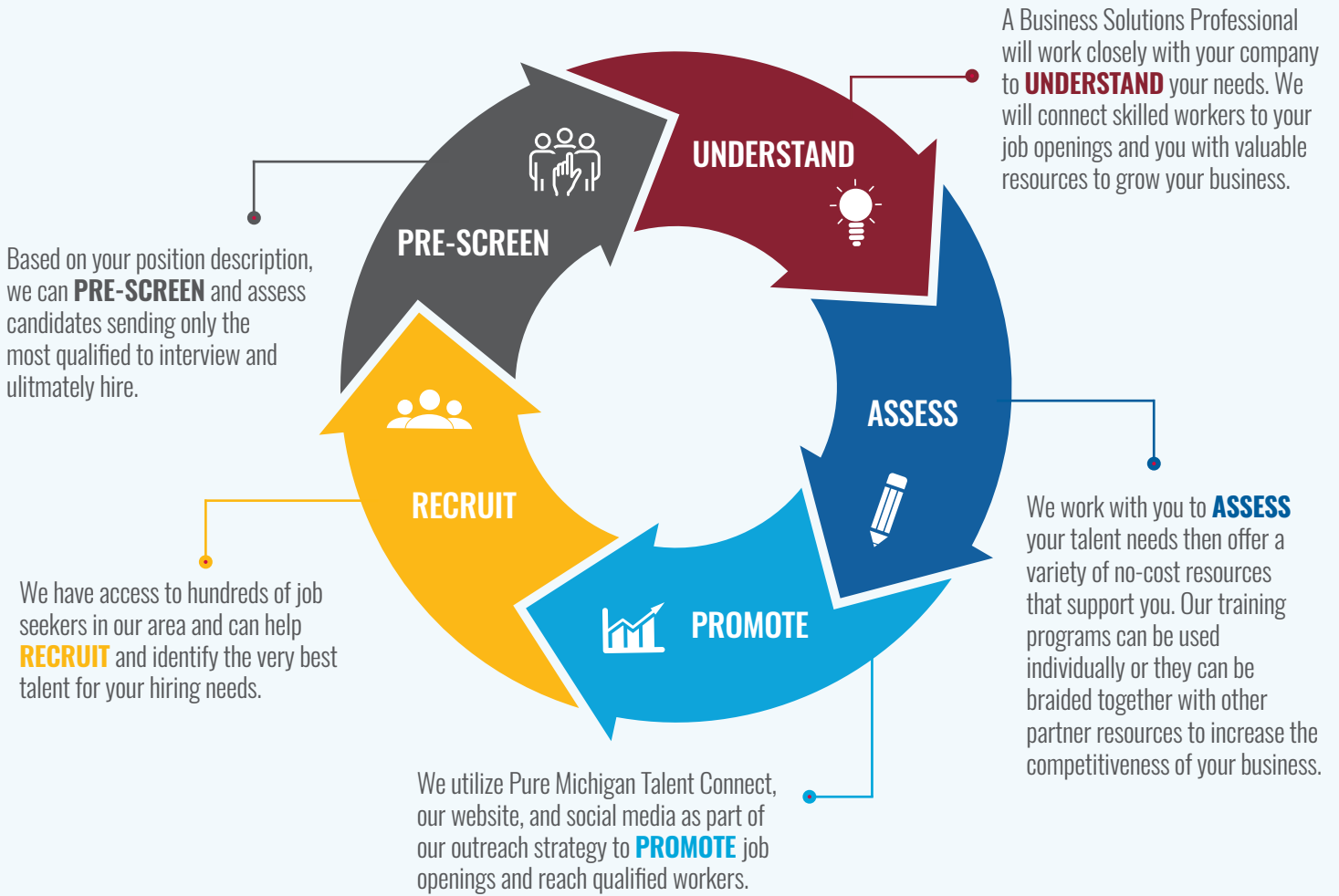


BUSINESS SERVICES

PARTNERS IN YOUR SUCCESS

SEMCA Michigan Works! understands that partnerships are key to building a successful Michigan Economy. Utilizing a demand-driven model, we are able to address workforce development needs efficiently and effectively. We work with you and a host of key partners to ensure we meet your talent needs.



FOR MORE INFORMATION
www.SEMCA.org | 800.285.9675 (TTY/TDD: 711)

BUSINESS SERVICES

Contact a Business Solutions Professional at one of these SEMCA Michigan Works! American Job Centers

DEARBORN AMERICAN JOB CENTER

6451 Schaefer Rd., 2nd Floor
Dearborn, MI 48126
313.945.8380

Masoud Al-Awamleh | malawamleh@accesscommunity.org
Richard De-Anda | rdeandabenitez@accesscommunity.org
Mustapha Mounajed | mmounajed@accesscommunity.org

GROSSE POINTE AMERICAN JOB CENTER

17888 Mack Ave.
Grosse Pointe, MI
313.343.5617

Saher Abdulmalek | sabdulmalek@miwdi.org
Kimberly Allen-Bradfield | kbradfield@miwdi.org
Ken Miller | kmiller@miwdi.org

HIGHLAND PARK AMERICAN JOB CENTER

144 E. Manchester St.
Highland Park, MI 48203
313.826.0299

Saher Abdulmalek | sabdulmalek@miwdi.org
Kimberly Allen-Bradfield | kbradfield@miwdi.org
Ken Miller | kmiller@miwdi.org

LIVONIA AMERICAN JOB CENTER

(Woodland Square Mall)
30246 Plymouth Rd.
Livonia, MI 48150
734.513.4900

Jack Jackson | jjackson2@edsolutions.com
Justin Skibin | jskibin@edsolutions.com
Xochitl Vaughan | xvaughan@edsolutions.com

MONROE AMERICAN JOB CENTER

(Monroe Mall)
1531 N. Telegraph Rd., Ste. D
Monroe, MI 48162
734.240.7950

Angela Barton | angelab@mcetd.us
Jill Cousino | jillc@mcetd.us

SOUTHGATE AMERICAN JOB CENTER

(Downriver Community Conference)
15100 Northline Rd.
Southgate, MI 48195
734.362.3466

Devin Gray | devin.gray@dccwf.org
Michael Jones | michael.jones@dccwf.org

WAYNE AMERICAN JOB CENTER

35731 W. Michigan Ave.
Wayne, MI 48184
734.858.4284

Bob McDonnell | rmcdonnell@etdinc.com
Melissa Skardoutos | mskardoutos@etdinc.com



SEMCA Michigan Works!
Lori Spicer | Talent Development Coordinator
25363 Eureka Rd. | Taylor, MI 48180
734.229.3500 | lori.spicer@semca.org